

**Parent  
Sign in**





**WALTON**

**EDUCATE ♦ INSPIRE ♦ EMPOWER**

# Administration



Mrs. Santoro

Dr. Jones

Dr. Milton

Dr. Williams

Ms. LaVangie

Mr. Tischler



**EDUCATE**



**INSPIRE**



**EMPOWER**

Get ready for the 2021-2022 school year!

# Online Orientation Olympics



Make a mad dash to the [PTSA website](#) now. Join the PTSA, sign up for E-Blasts, and volunteer for programs and events. Get connected on social media too. PTSA welcomes our freshmen and new families, celebrates our seniors, funds self-defense programs, advocates for all children, organizes school volunteers, and much more!



Take a quick lap to the [Walton Foundation website](#). While continuing to hire teachers to reduce class sizes, the Foundation also fills our hand sanitizing stations, funds teacher grants, and beautifies our school grounds.



Cover all your bases! Go to [Parent Vue](#) and check that your emails and phone numbers are accurate so Walton Administration and your child's teachers can correspond with you.



Ace mealtime by visiting the [Cobb County Food Services website](#). You can prepay for school lunches, purchase meal kits for the whole family, and register for free and reduced lunches. You may even qualify for reduced fees for AP, SAT, and ACT testing.



On July 15, flip over to [My Payments Plus](#) to pay for items that are required by the school, including class dues, vocabulary books, Naviance subscriptions, etc.

<b>PSAT test fees (Pre SAT test in October) <i>Suggested for all Freshman</i></b> – State will pay for Sophomores' Fees	\$18.00
<b>ACADEMIC FEES (Vocabulary online access, Turnitin, x2Vol/Naviance)-Required</b>	\$20.00
<b>CLASS DUES INCLUDES CLASS SHORT SLEEVED T-SHIRT</b> <i>Please Circle T-Shirt Size</i> S    M    L    XL    XXL	\$30.00

# Supporting Walton

---



Together: Educate. Inspire. Empower.  
**WALTON HIGH SCHOOL**

PTSA 2021-2022



Student Body President – Drew Krolick

# Walton's Class of 2025

---



- Our Differences are Good
- Your Support is Our Strength
- Parents Don't Understand And They Do Understand
- Thrive With Space to Grow
- Use Walton's Resources
- Reach Out to Upperclassmen
- Find a Niche
- Walton is a Wonderful Journey





# WEB- How does it work?

## May Leave List

“May Leave” means a student, with parental guidance, is individually responsible for his/her own choices as to remaining or leaving school. The student will be responsible for his/her time management choices. If a student chooses to remain at school, they must sign up for and attend one or more WEB blocks.

## Must Stay List

“Must Stay” means a student must sign up and attend WEB blocks. During homeroom advisement each WEB, students on the “Must Stay” list will receive a notice that they are required to stay for WEB. Before WEB begins, they must sign up for blocks to account for their time. Attendance will be taken during each block. After the first six weeks, freshmen students with an “F” in one course or more will be placed on the “MUST STAY” list. **If a student is on the “Must Stay” list, failure to attend WEB blocks will result in an administration referral.**

# WEB Schedule (12:42 pm – 3:30 pm)

*From 8:20-12:42 on WEB days, students attend their 1<sup>st</sup> through 7<sup>th</sup> period classes (shortened class periods).*

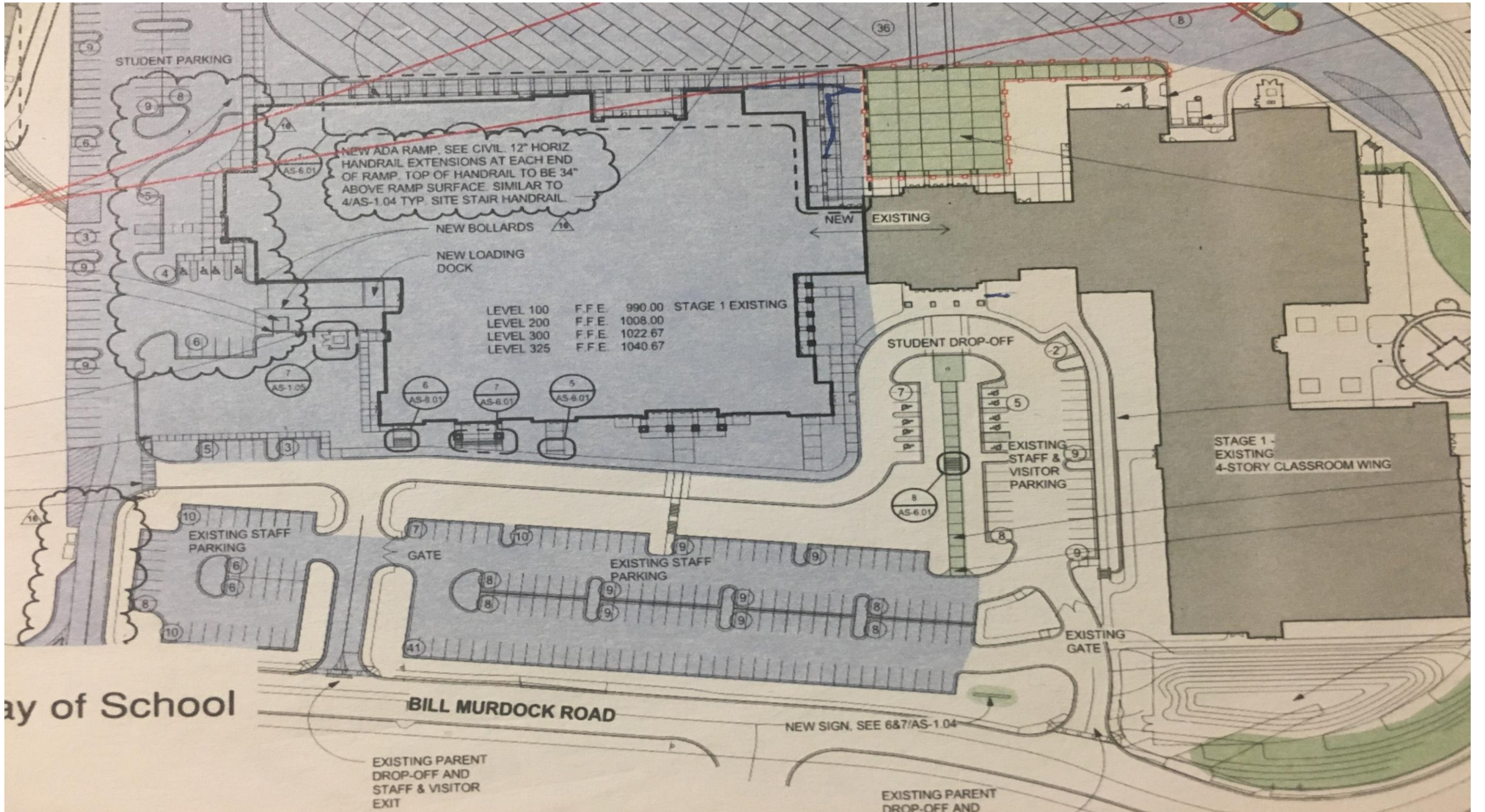
- **Block A**            **1:03-1:36**
- **Block B**            **1:41-2:14**
- **Block C**            **2:19-2:52**
- **Block D**            **2:57-3:30**

- **2021-2022 Scheduled WEB Days- All Freshman must stay on August 18th**

- 8/18; 9/1; 9/15; 9/22; 10/6; 10/15 (FRI); 10/27; 11/10; 11/17; 12/1; 12/8; 12/14 (TUE); 1/12; 1/26; 2/2; 2/9; 2/16; 3/2; 3/16; 3/23; 4/1 (FRI); 4/13; 4/20; 5/11; 5/20 (FRI)

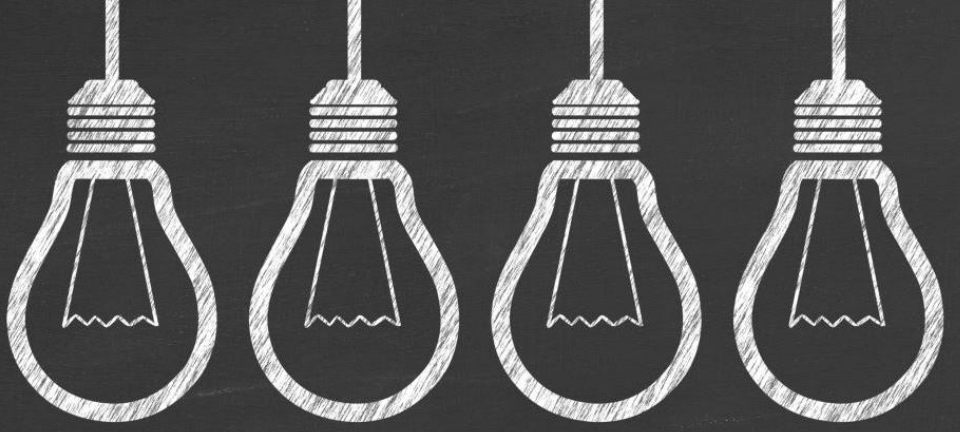
- *WEB's are on Wednesdays unless otherwise indicated.*

- **Buses run at 3:30 pm.**



# Attendance

- Students coming to school after 8:30 must check in with the Attendance office before going to class.
- Anyone needing to leave campus **must have parental permission to do so**. On the day you need to leave, please have your parent to send us an email to Kim Gibson or Emalea Gilvin with your first and last name, Cobb Id(lunch number), time leaving, and reason leaving, as early as possible . We will send a dismissal to your Cobb County email address. If you return, simply reply to our email, and let us know you are back on campus.
- If you are absent, please have your parent send an email within three days. The absence will remain **unexcused**, if we do not receive a note, or the reason is not an excusable one. (see agenda with state approved reasons).
- Please feel free to stop by if you have any questions about attendance or a certificate of enrollment for your driving permit. When you enter the building, we are the office on the left.



# Schoolwide Expectations

---

- Discipline
- Social Media
- Dress Code
- Get involved



# Athletics

- Eligibility
- Athletic  
Registration/Physical
- Walton Sport Medicine  
and Northside  
Partnership
- Getting started!

# Scheduling

Full Schedule

Wrong Schedule

Process for corrections

Elective Choices



## Walton's Counselors







# We Are Here to Help YOU!

---

- Counseling Services Offered:
  - Classroom Lessons for all students
  - Academic Advisement in 9<sup>th</sup> grade (spring) and 11<sup>th</sup> grade (fall)
  - Social, Emotional, and Academic support
  - Parent, Teacher, and Student Conference coordination
  - Referrals to local therapists/resources
  - Senior Year College and Career process advisement and support
  - Dual Enrollment Information
  - 504 and RTI Coordination
  - Naviance Introduction
  - So much more! Please visit our website, <https://www.waltonhighcounseling.com> and our Social Media accounts regularly for Counseling news!

# Tips from your School Counselor

---

Grades are IMPORTANT—understanding GPA calculation and impact

---

Plan with the end in mind—monitoring graduation and promotion requirements and planning for future

---

Be active/involved—remembering quality vs. quantity (balance important)

---

Using Naviance to keep plans organized and to help with career/college exploration

---

Much help available—using available tutoring and teachers' help times efficiently and effectively

---

Attend parent nights and advisement

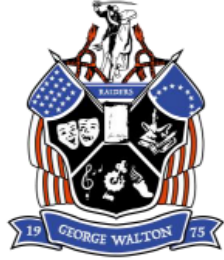
# Staying Informed

- PTSA Eblast
- CTLS Parent
- Walton Website



# What is a Conversion Charter School?

Autonomy/Flexibility



# Walton High School

## Class of 2021 – By the Numbers



**636**  
Graduates



**90%** 4-year College Enrollment  
**4%** 2-year College Enrollment



**452**  
Honor  
Graduates

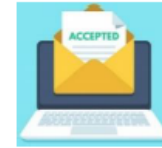
**1** Military  
Enlistment



**134**  
Colleges enrolled for  
fall 2021



**\$6,012,932**  
Offered in scholarships  
(not including HOPE)



**2,046**  
Total college  
Acceptances

**397** Students took at  
least one AP course



**5** Acceptances



**248**  
Seniors with a  
4.0 or higher

In four years:



**8** State Championships  
**1** GADA Director's Cup



**63** AP Scholars\*  
**140** AP Scholars with Distinction\*  
**45** AP Scholars with Honors\*  
**28** National AP Scholars\*

\* Not including 2021 tests

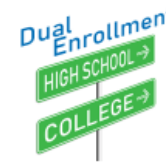


**44,710** Hours of  
Community Service

**25** National Merit  
Semifinalists



**61** Dual Enrolled



**31** College Athletes